



“येथे बहुतांचे हित”

MARATHWADA MITRA MANDAL'S
COLLEGE OF COMMERCE

Affiliated to Savitribai Phule Pune University, Re-Accredited by NAAC with “A” Grade
ISO 9001:2015 Certified, Awarded as Best College by Savitribai Phule Pune University
202 A, Deccan Gymkhana, Pune – 411004

principal@mmcc.edu.in, enquiry@mmcc.edu.in, www.mmcc.edu.in

REPORT ON CLEAN AND GREEN CAMPUS

A Comprehensive Report on the Clean and Green Campus Initiative

Executive Summary:

In response to the pressing need for environmental stewardship, our institution MMCC has embarked on a transformative journey toward sustainability. Through concerted efforts, our college campus has evolved into a shining example of environmental consciousness, boasting a myriad of initiatives aimed at reducing our ecological footprint. This report delves into the various facets of our Clean and Green Campus initiative, highlighting achievements, challenges, and future directions.

Introduction:

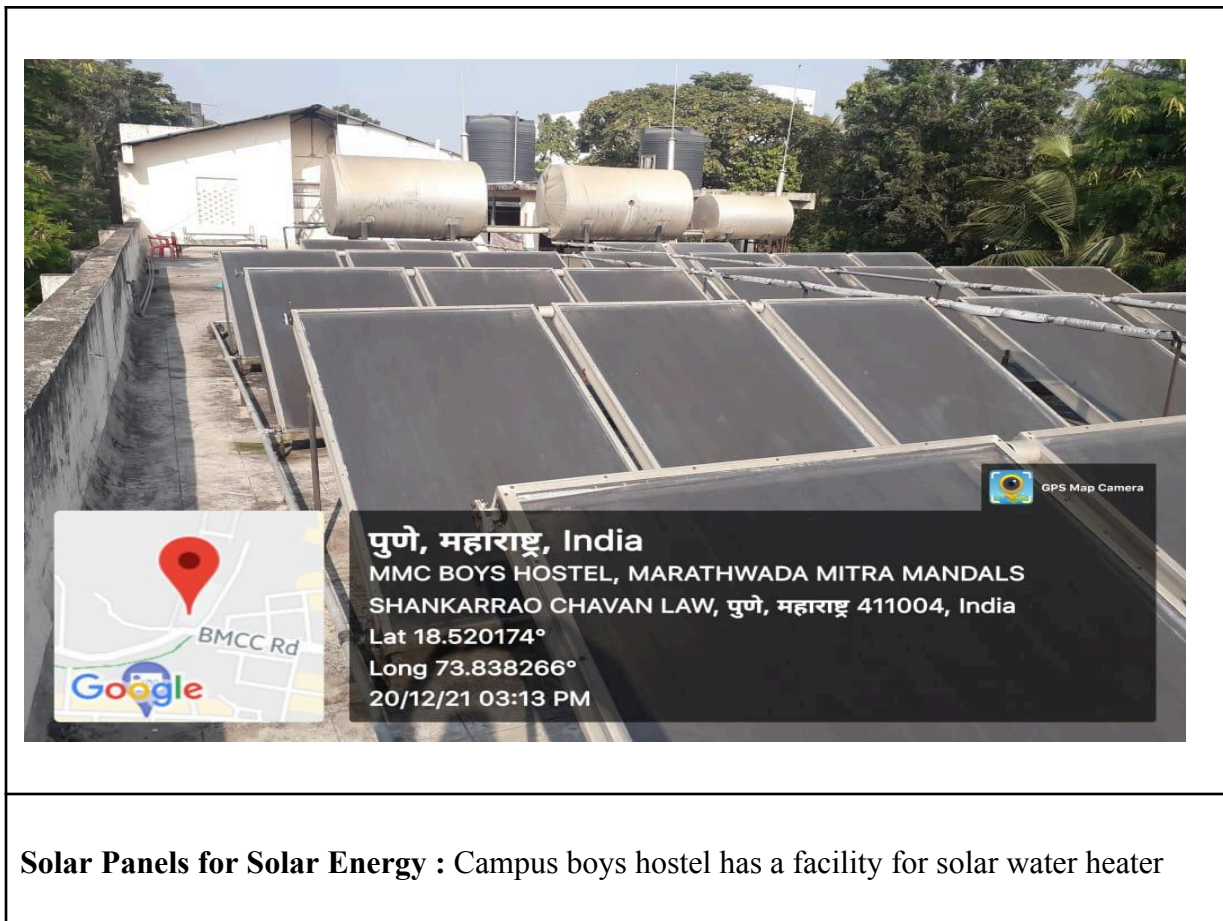
With the escalating threats of climate change and environmental degradation, institutions of higher education are increasingly recognizing their responsibility to lead by example. Our college, situated amidst lush greenery and serene landscapes, has embraced sustainability as a core value. The Clean and Green Campus initiative was conceived as a holistic approach to integrate sustainable practices into every aspect of campus life, fostering a culture of environmental awareness and responsibility.

1. Energy Efficiency and Conservation:

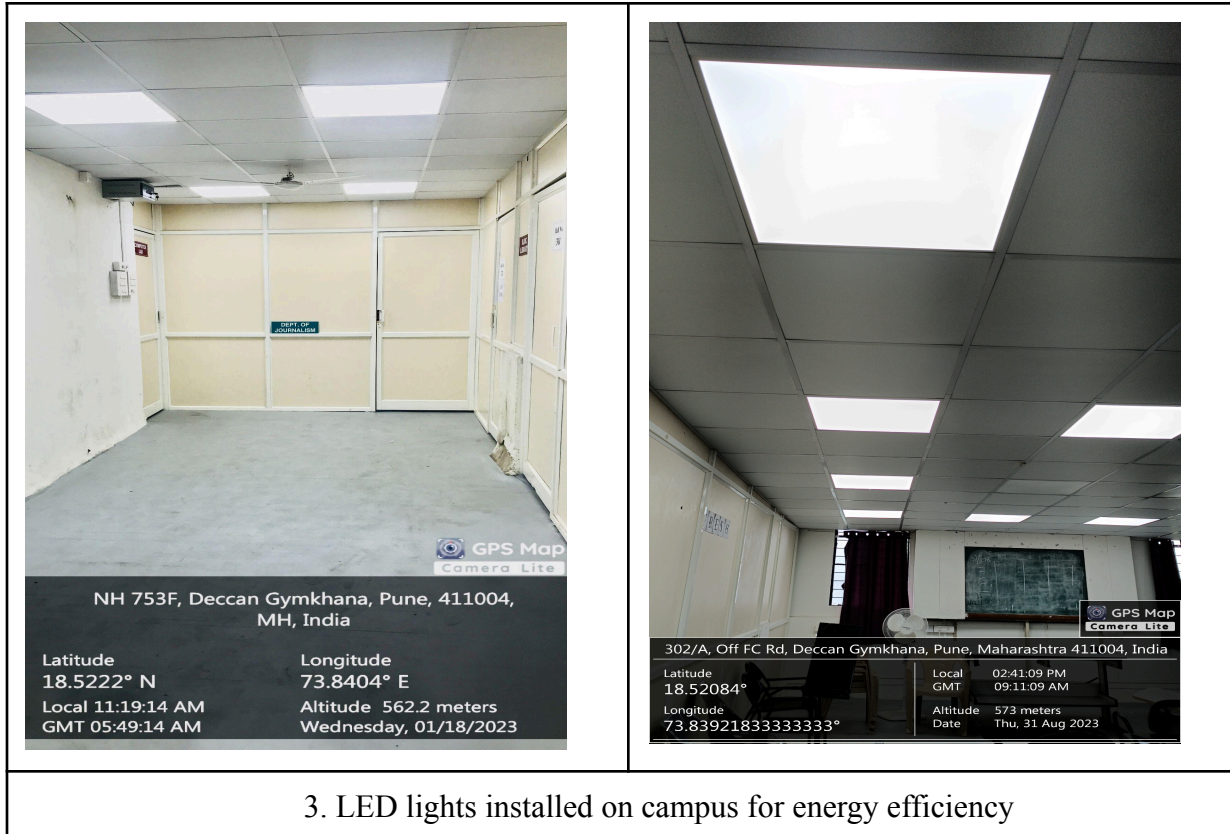
Efficient energy utilization lies at the heart of our sustainability endeavors. The implementation of energy-efficient technologies, such as LED lighting and smart heating, ventilation, and air conditioning (HVAC) systems, has resulted in significant reductions in energy consumption. Furthermore, awareness campaigns and educational programs have empowered students and staff to adopt energy-saving habits, leading to a tangible decrease in overall energy demand.

MMCC is well equipped with energy efficiency units

1. Solar energy
2. Use of LED bulbs







3. LED lights installed on campus for energy efficiency

2. Waste Management and Recycling:

A robust waste management system forms the cornerstone of our sustainability efforts. Through the establishment of recycling centers, composting facilities, and waste segregation protocols, we have significantly minimized our landfill contributions. Moreover, partnerships with local recycling agencies and innovative initiatives, such as upcycling workshops and zero-waste events, have fostered a culture of waste reduction and resource conservation among the campus community.

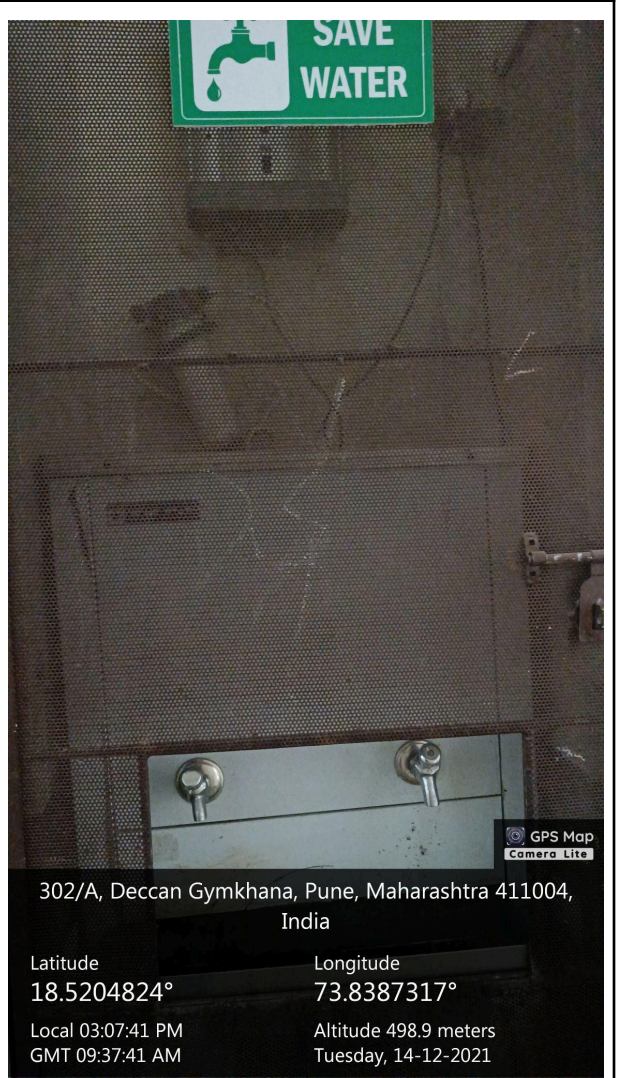
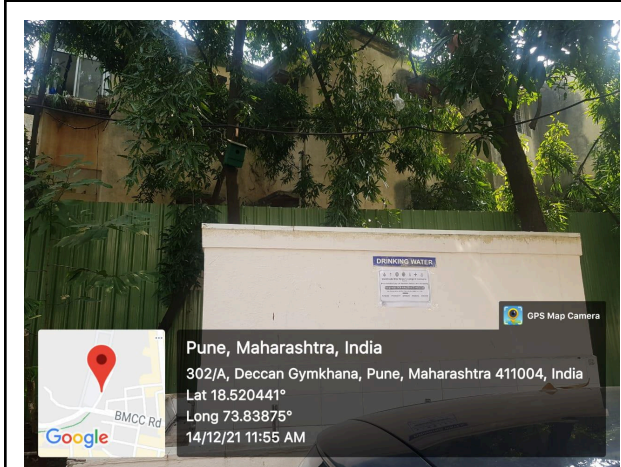
3. Green Infrastructure and Biodiversity Conservation:

The preservation of our natural ecosystems is paramount to our sustainability goals. To this end, extensive green infrastructure projects, including native plant landscaping, rainwater harvesting systems, and wildlife habitats, have been implemented across campus. These initiatives not only enhance biodiversity but also serve as living laboratories for ecological research and education, engaging students in hands-on learning experiences that foster a deeper appreciation for nature.

Every year the college observes ‘**No Vehicle Day**’ to promote green practices.



Staff was made aware of the benefits of reusable masks to promote good practices of ‘Reduce Reuse Recycle’.



4. Ban on Use of Plastic: Students and staff are encouraged to use metal containers for drinking water or refilling them. Tea is served using paper cups. This has ensured no use of plastic and the campus has become Plastic Free.



202/A, MMCC Campus, Deccan Gymkhana, Pune, Maharashtra 411004, India

Latitude
18.520736666666668°

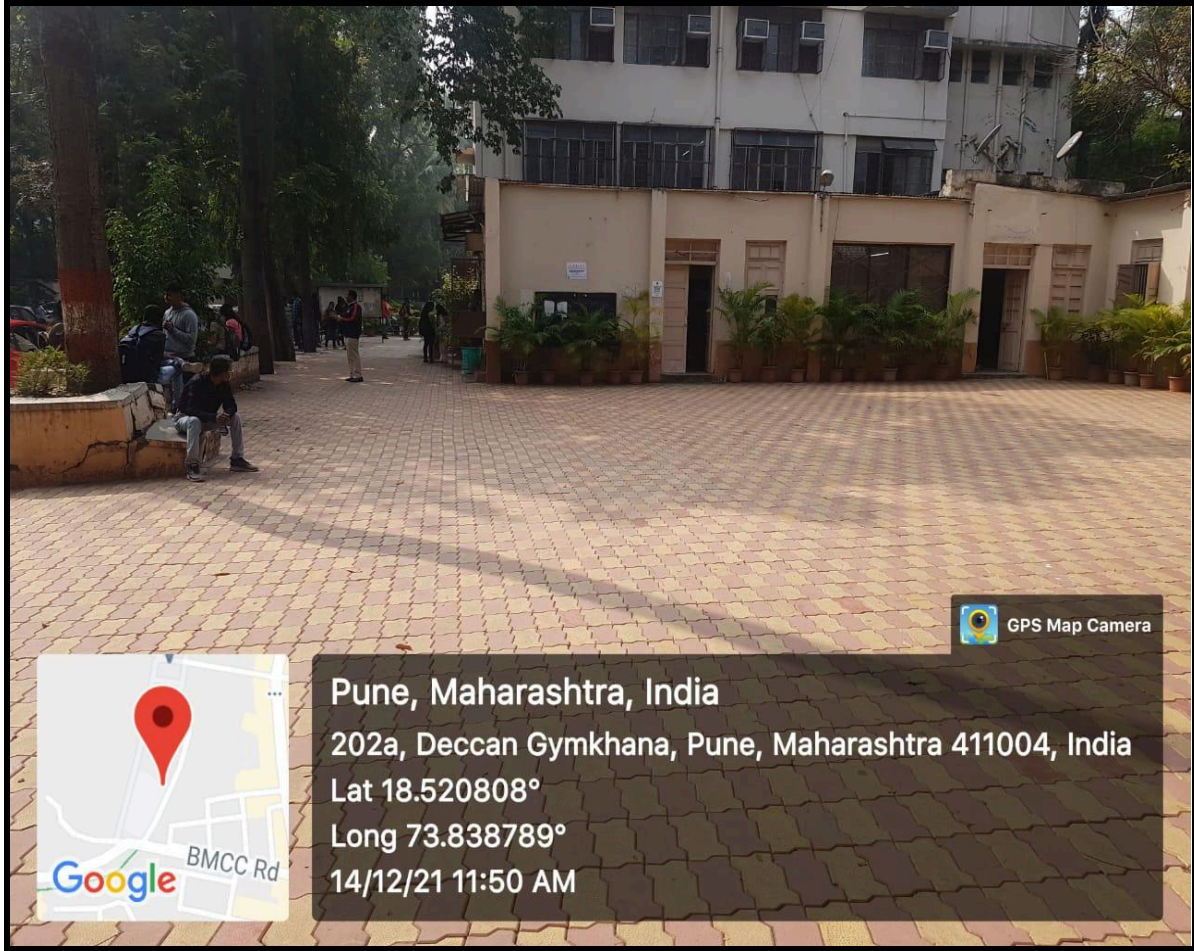
Longitude
73.838773333333334°

Local 11:40:05 AM
GMT 06:10:05 AM

Altitude 500.3 meters
Friday, 13-01-2023

5. 'Reduce-Reuse -Recycle'.





6. Clean and Green Campus of MMCC





7. PEHEL 2022 (Plastic and E-waste Handling for Eco-friendly Lifestyle): MMCC College students, Pune Municipal Corporation Commissioner guided students about the need for e-waste classification and its importance.

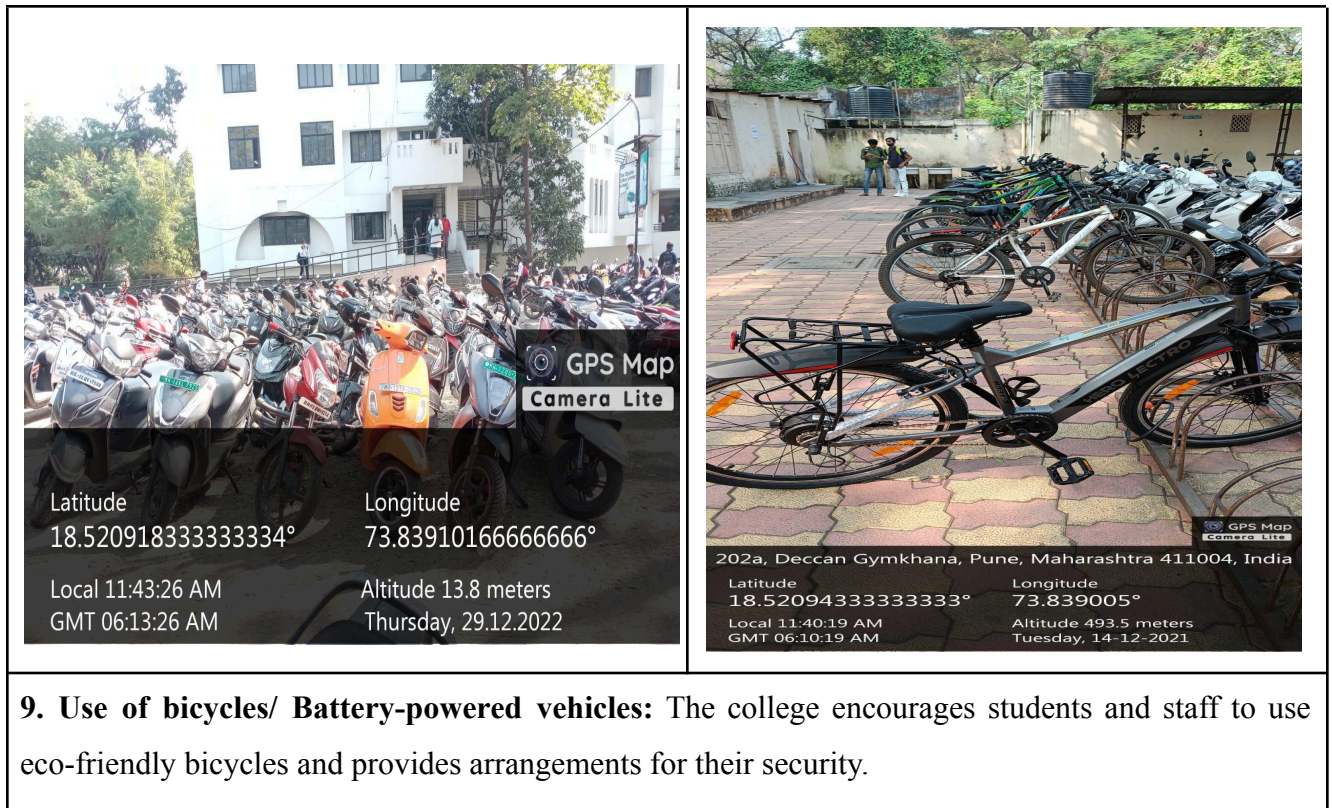




8. Street Play: Students of MMCC demonstrate the importance of E-waste and its classification through a Street Play

4. Sustainable Transportation:

Addressing the environmental impacts of transportation is essential in achieving a clean and green campus. Our institution has prioritized the promotion of sustainable transportation alternatives, such as biking, walking, and the use of electric vehicles. The expansion of bike lanes, installation of bike-sharing stations, and provision of incentives for public transportation usage have resulted in a notable reduction in carbon emissions associated with commuting, while simultaneously promoting healthy and active lifestyles.



5. Education and Outreach:

Education is a powerful tool for fostering sustainable behavior change. Through a multifaceted approach encompassing academic curriculum integration, extracurricular activities, and community outreach programs, we strive to cultivate a culture of environmental literacy and activism. Guest lectures, workshops, and sustainability-themed events serve to inspire and empower individuals to become agents of positive change, both on campus and beyond.



Challenges and Future Directions:

While significant progress has been made, our journey towards a fully sustainable campus is not without challenges. Limited financial resources, logistical constraints, and cultural barriers pose ongoing obstacles to our efforts. Moving forward, we are committed to addressing these challenges through strategic planning, stakeholder engagement, and innovation. Key future directions include:

Continued Investment in Renewable Energy: Expanding our renewable energy infrastructure, such as solar panels and wind turbines, to further reduce our carbon footprint and enhance energy resilience.

Enhanced Water Conservation Measures: Implementing advanced water-saving technologies and promoting water-efficient practices to mitigate the impact of drought and ensure the sustainable management of water resources.

Integration of Climate Resilience Strategies: Developing climate adaptation plans to safeguard our campus against the increasingly severe impacts of climate change, including extreme weather events and sea-level rise.

Promotion of Sustainable Procurement Practices: Prioritizing the procurement of environmentally friendly products and services, while supporting local and ethical suppliers to promote economic sustainability.

Conclusion:

In conclusion, MMCC strongly supports and meticulously executes the Clean and Green Campus initiative embodies our unwavering commitment to environmental stewardship and sustainable development. By fostering a culture of innovation, collaboration, and responsibility, we are not only transforming our campus into a model of sustainability but also inspiring future generations to embrace the principles of environmental conservation. Together, we can create a cleaner, greener, and more sustainable future for all.

Prepared by:

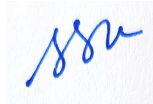
Verified by:

Approved by:



Prof. Swapnil Kamble

Incharge- Criteria 7



Dr. Swapna Kolhatkar

IQAC Coordinator



Dr. Devidas Golhar

Principal

